

Which Linux distribution?

Difficulty in choosing?



ubuntu.



ubuntu MATE

xubuntu 



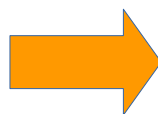
lubuntu



kubuntu



ubuntu 
studio.



Ver 20260207

www.ubuntutor.com

Contents

Page	Contents
3	That's enough
4	At first
5	At first little about Linux world
6	Quick start guide for choosing the right distro for beginners
7	Basic information
8	"Linux tree"
9	Basic information
10	Questions on the web site
11	Distros
12	App store
13	Test drive Linux distros online! NEW!
14	Ubuntu 22.04 LTS
15	Ubuntu MATE
16	Lubuntu
17	Ubuntu Budgie
18	Kubuntu
19	Xubuntu
20	Linux Mint
21	Zorin
22	MX Linux
23	Pepermint
24	Deepin
25	Arch Linux
26	Manjaro
27	Ubuntu Kylin
28	EndeavourOS
29	Garuda Linux
30	Ubuntu Studio
31	Kali Linux
32	Educational Linux Distros
33	Desktop environments for Linux
33	File manager NEMO
35	File manager NAUTILUS
36	Installing Ubuntu live USB (test drive)

That's enough

When laptop is old and there is Windows XP, what to do?

You can install Ubuntu Mate on your old laptop and keep at the same time Windows XP too, if you like XP.

Or you can buy a tiny new laptop about 200-300 €/€ and change Windows 10 to Ubuntu. It works! I have made both about ten years ago, and I haven't used Windows since then. My own laptop is cheap HP Stream 2 MB/32 GB.

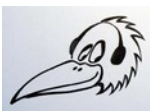
When I was studying Ubuntu, I noticed that simple beginner's tutorials were not available. So, I did a guide book. I also created a website and named it www.ubuntutor.com. It currently includes Ubuntu 16.04, 18.04, 20.04, 22.04 and 24.04 tutorials.

I hope this guide is helpful in choosing a distro that suits for you. And welcome to the Linux world.

Feedback is always valuable. Feedback can be sent to comment@ubuntutor.com

I wish good Linux moments

Hannu



Feedback: comment@ubuntutor.com

This guide book you find from www.ubuntutor.com

This work is licensed

[Creative Commons Nimeä-EiKaupallinen-JaaSamoin 4.0 Kansainvälinen -lisenssillä Attribution-NonCommercial-ShareAlike 4.0 International \(CC BY-NC-SA 4.0\)](https://creativecommons.org/licenses/by-nc-sa/4.0/)



This guide book / file is freely copyable.

At first

Frequently people ask, which Linux distribution package is best for beginners? It is difficult for a beginner to distinguish between different distribution packages. This is why I have collected in this guide some different distribution packages and their differences. Advices, answers and opinions has gathered from various online forums.

Some common Linux distribution packages are presented here.

These instructions are for people who are beginners to the Linux world.

Ubuntu is very common and there are many versions. These versions are called distributions or distro. The version number of the distro consists of the year and month (18.04 = 2018 April) and LTS means that this version will be updated for several years (Ubuntu 6 years).

Beginners should always use the LTS version.

This guide contains many links to help the reader explore more.

Here are some important things a beginner should keep in mind when choosing a distribution.

First, consider the following:

- how old your computer is (32 or 64 bit)
- have you ever tried Linux programs, try the USB installing stick on your own computer without permanent installing [creating a Live USB \(How To Try Linux Without Making Any Changes To Your PC\)](#).
- if you still want to keep Windows, you can have both on your own computer
- make back up from your data before installation
- **the forum is important and there you can ask for advice. This is a very important point**
- try to find a forum in your native language
- note that all the different distribution packages work the same way and all have the same basic software
- Also, think about how you want to work with file management. Do you prefer drop-down menus or the newer three-line functionality?

Ubuntu tutorials in www.ubuntutor.com are also well suited for studying other distribution packages.

Long-term support (LTS) is a product lifecycle management policy in which a stable release of computer software is maintained for a longer period of time than the standard edition. The term is typically reserved for open-source software, where it describes a software edition that is supported for months or years longer than the software's standard edition. Wikipedia

At first little about Linux world

Linux is open source operating system whereas Windows OS is commercial. Linux has access to source code and alters the code as per user need whereas Windows does not have access to source code. Linux supports a wide variety of free software's than windows but windows have a large collection of video game software.

Linux vs Windows

[Linux vs Windows - Find Out The 9 Most Awesome Differences](#)

[Windows vs Linux: what's the best operating system? | IT PRO](#)

[Linux vs. Windows: An Objective Look at Both Operating Systems](#)

[Linux vs Windows: What's the Difference? - Guru99](#)

[Linux vs. Windows - Computer Hope](#)

[11 Reasons Why Linux Is Better Than Windows - It's FOSS](#)

Linux

[What is Linux? | Opensource.com](#)

[What is Linux? Everything you need to know about the open-source ...](#)

[10 Reasons To Use Ubuntu Linux - Fossbytes](#)

[Ubuntu: A Beginner's Guide - MakeUseOf](#)

Desktop Environment

Beginners!

[Linux For Beginners: What's A Desktop Environment? - Forbes](#)

In computing, a desktop environment is an implementation of the desktop metaphor made of a bundle of programs running on top of a computer operating system, which share a common graphical user interface, sometimes described as a graphical shell. [Wikipedia](#)

What are Linux desktop environments?

GNOME, like KDE, provides a full desktop environment. GNOME has its own file manager (Nautilus), Web browser (Epiphany), mail client (Evolution) and a bevy of supporting applications. ... Xfce is the default desktop for the Xubuntu distribution, and Xfce packages are available for most major Linux distros. Jun 14, 2007

[Click here, you get more info!](#)

computer operating system (OS)

graphical user interface (GUI)

Quick start guide for choosing the right distro for beginners

Beginners!

Do you doubt the Linux programs, but you are interested?

Make a usb stick test version (MATE or Ubuntu),
and try it (installation instructions at the end of this guide)
Try out different Linux distributions online! Virtual platforms let you
experience the look, feel, and functionality of Linux OS without any commitment.
<https://distrosea.com>

How old is your machine?

Old PC

New PC

Try Ubuntu MATE (LTS),
use USB Live-stick

Try Ubuntu (LTS),
Use USB Live-stick

Explore the program, try it with your own files. Also check if the wifi is working.

If it feels good, install the program.
Remember to make a back up before installation!

During installation, select; just MATE/Ubuntu or do you also
keep the old system (Windows)? Keep the installation stick!

Learn the basics => www.ubuntutor.com

Once you know the basics, you can consider
another distribution according to your own
preferences or needs

Basic information

The UNIX logo is the word "UNIX" in a bold, black, sans-serif font, with a registered trademark symbol (®) to its upper right. It is positioned at the top of a vertical blue oval that frames the logos of the operating systems listed below.

Unix is a family of multitasking, multiuser computer operating systems that derive from the original AT&T Unix, development starting in the 1970s at the Bell Labs research center by Ken Thompson, Dennis Ritchie, and others. [Wikipedia](#)

Initial release date: November 3, 1971

License: Varies; some versions are proprietary, others are free/open-source software

Developer: Ken Thompson, Dennis Ritchie, Brian Kernighan, Douglas McIlroy, and Joe Ossanna at Bell Labs

Default user interface: Command-line interface and Graphical (X Window System)

Written in: C, Assembly language

Awards: Turing Award



Linux is a family of open source Unix-like operating systems based on the Linux kernel, an operating system kernel first released on September 17, 1991 by Linus Torvalds. Linux is typically packaged in a Linux distribution. [Wikipedia](#)

License: GPLv2 and others (the name "Linux" is a trademark)

Initial release date: September 17, 1991

OS family: Unix

Developer: Community; Linus Torvalds

Written in: C, Assembly language

Default user interfaces: Unix shell, GNOME, KDE Plasma 5, MATE, twm, Cinnamon, Unity, LXDE, elementary OS, Xfce



Debian is a Unix-like operating system consisting entirely of free and open-source software. Ian Murdock founded the Debian Project on August 16, 1993. The first version, Debian 0.01, was released on September 15, 1993, and the first stable version, 1.1, was released on June 17, 1996. [Wikipedia](#)

Package manager: APT (front-end), dpkg

Initial release: September 1993; 25 years ago

License: DFSG-compatible licenses

Userland: GNU

Default user interface: GNOME

Developer: The Debian Project



Ubuntu is a free and open-source Linux distribution based on Debian. Ubuntu is officially released in three editions: Desktop, Server, and Core. All the editions can run on the computer alone, or e.g. in Windows. Ubuntu is a popular operating system for cloud computing, with support for OpenStack. [Wikipedia](#)

Package manager: GNOME Software, APT, dpkg, Snappy, flatpak

License: Free software

Userland: GNU

Initial release date: October 20, 2004

Developer: Canonical Ltd.

Programming languages: Python, Java, C, C++, C#

"Linux tree"

Unix for big computers, computer operating system

Linux open source Unix-like operating system

Debian is a Unix-like operating system

Ubuntu is a free and open-source Linux distribution based on Debian

Kali Linux is a Debian-derived Linux distribution

Arch Linux is a Linux distribution for computers based on x86-64 architectures

Ubuntu distributions, several!

Debian distributions, several!

Arch Linux distributions, several!

Lubuntu is a lightweight Linux distribution based on Ubuntu

Linux Mint is a community-driven Linux distribution based on Ubuntu

Kubuntu is a lightweight Linux distribution based on Ubuntu

Ubuntu MATE is a Linux distribution and an official derivative of Ubuntu

Beginners!

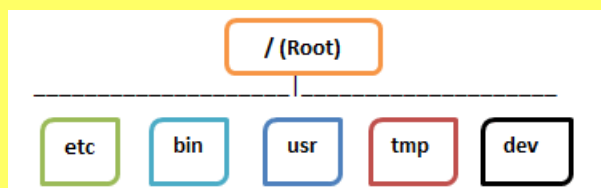
Windows Vs. Linux File System

In Microsoft Windows, files are stored in folders on different data drives like C: D: E:

But, in Linux, files are ordered in a tree structure starting with the root directory.

This root directory can be considered as the start of the file system, and it further branches out various other subdirectories. The root is denoted with a forward slash '/'.

A general tree file system on your UNIX may look like this.



Basic information

Desktop environments (how the screen look like)

GNOME is a free and open-source desktop environment

KDE Plasma is a free graphical workspaces environment

Cinnamon is a free and open-source desktop environment for the X Window System that derives from GNOME 3

Unity is a graphical shell for the GNOME desktop environment



GNOME is a free and open-source desktop environment for Unix-like operating systems. GNOME was originally an acronym for GNU Network Object Model Environment, but the acronym was dropped because it no longer reflected the vision of the GNOME project.

[Wikipedia](#)

Original author(s): The GNU Project

License: GPLv2+

Developed by: The GNOME Project

Stable release: 3.32.2 (8 May 2019; 3 months ago)

Written in: XML, C++, C#, HTML, Vala, Python, JavaScript, Cascading Style Sheets, Scheme
Platforms: Wayland, X Window System



[KDE Plasma 5](#) is the fifth and current generation of the graphical workspaces environment created by [KDE](#) primarily for Linux systems.

KDE Plasma 5 is the successor of [KDE Plasma 4](#) and was first released on 15 July 2014.[1][4][5] It includes a new default theme, known as "Breeze", as well as increased convergence across different devices. The graphical interface was fully migrated to QML, which uses OpenGL for hardware acceleration, which resulted in better performance and reduced power consumption.[1]



Unity is a graphical shell for the GNOME desktop environment originally developed by Canonical Ltd. for its Ubuntu operating system. Unity debuted in the netbook edition of Ubuntu 10.10. [Wikipedia](#)

Developer(s): Canonical Ltd., The Ayatana Project contributors, UBports

Stable release: 7.5 / 25 May 2016; 3 years ago

Initial release date: June 9, 2010

Preview release: 8.16.1

Operating system: Ubuntu Desktop, Ubuntu TV, Ubuntu Touch

Written in: JavaScript, QML, C++, Python, Vala



Cinnamon is a free and open-source desktop environment for the X Window System that derives from GNOME 3 but follows traditional desktop metaphor conventions.[Wikipedia](#)

Stable release: 4.2.3 / 25 July 2019; 18 days ago

Operating system: Unix-like with X

Developer(s): Linux Mint team

License: GPLv2

Written in: C, JavaScript, Python

7 Best Desktop Environments For Linux

Questions on the web site

"in my opinion..."

Is Ubuntu the same as Debian?

Linux Mint is based on Ubuntu. Ubuntu is based on Debian. Like this, there are several other linux distributions that are based on Ubuntu, Debian, Slackware, etc. What confuses me is what does this mean i.e one Linux distro based on some other.

1. [What is the easiest Linux OS to use instead of Windows for a home computer?](#)
2. [Which Linux distribution has the best GUI for novices in 2020?](#)
3. Read the (free) [Linux Distributions Guide](#) to get a basic understanding of what distros and GUIs are and what the differences are.



Very good!



Beginners!

[Linux For Beginners: Understanding The Many Versions Of Ubuntu](#)

[Best 5 Linux Distros for Windows 7 Users](#)

Good solution!

[How to install Linux alongside old Windows?](#)

Distros

*Ubuntu is one of the most popular Linux operating systems in the world due to its ease of use, pleasing interface and stability. It's the perfect gateway into Linux because of how user-friendly it is. But did you know there are seven different "flavors" of Ubuntu?**

The many flavors of Ubuntu

Beginners!

And remember, you can try each one out for yourself by [downloading the OS](#) and [creating a Live USB](#). It's an easy process, and then you can test drive it right off the USB stick without making any changes to your PC.

<https://ubuntu.com/download/flavours>



Kubuntu [↗](#)

Kubuntu offers the KDE Plasma Workspace experience, a good-looking system for home and office use.

Ubuntu family



Lubuntu [↗](#)

Lubuntu is a light, fast, and modern Ubuntu flavor using LXQt as its default desktop environment. Lubuntu used to use LXDE as its default desktop environment.



Ubuntu Budgie [↗](#)

Ubuntu Budgie provides the Budgie desktop environment which focuses on simplicity and elegance. It provides a traditional desktop metaphor based interface utilising a customisable panel based menu driven system.



Ubuntu Kylin [↗](#)

The Ubuntu Kylin project is tuned to the needs of Chinese users, providing a thoughtful and elegant Chinese experience out-of-the-box.



Ubuntu MATE [↗](#)

Ubuntu MATE expresses the simplicity of a classic desktop environment. Ubuntu MATE is the continuation of the GNOME 2 desktop which was Ubuntu's default desktop until October 2010.



Ubuntu Studio [↗](#)

Ubuntu Studio is a multimedia content creation flavor of Ubuntu, aimed at the audio, video and graphic enthusiast or professional.



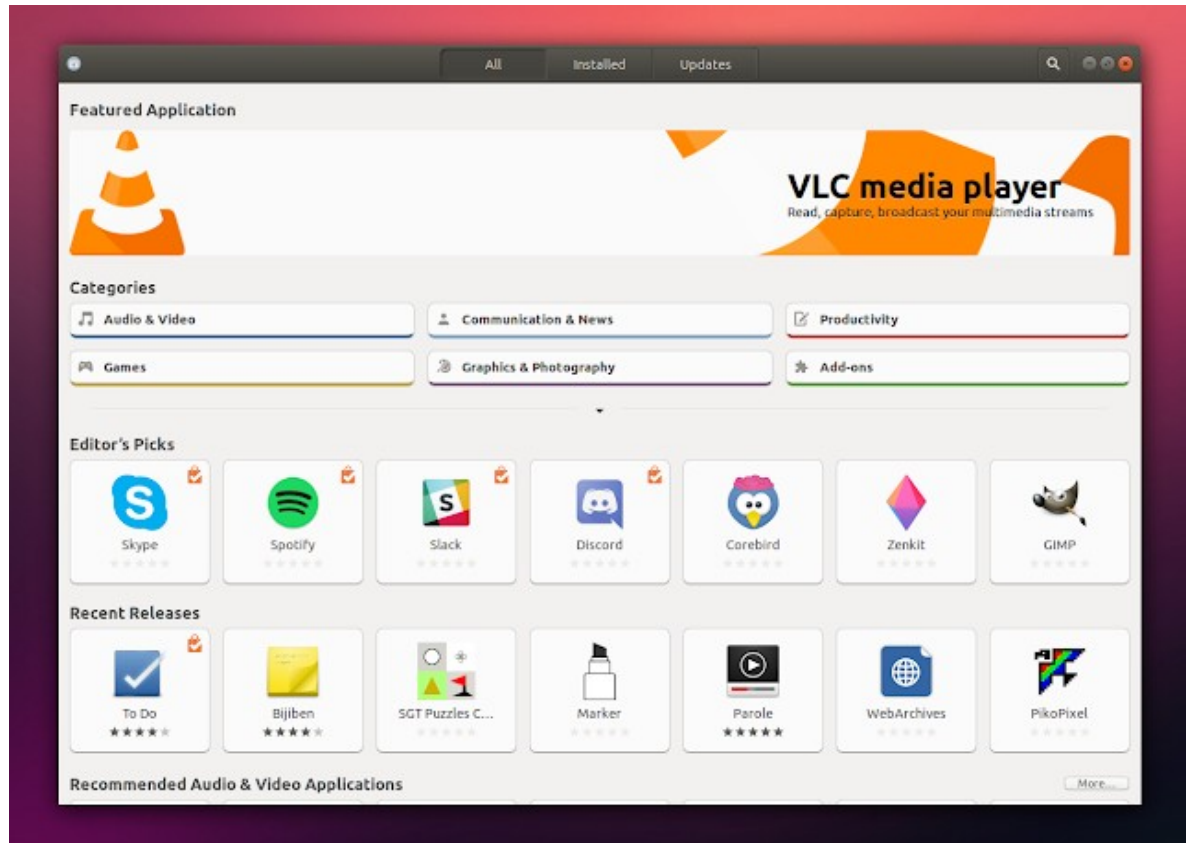
Xubuntu [↗](#)

Xubuntu is an elegant and easy to use operating system. Xubuntu comes with Xfce, which is a stable, light and configurable desktop environment.

Here is a great collection of different distributions. A real data bank. Very good!

<https://distrowatch.com/dwres.php?resource=popularity>

App store



Ubuntu Linux comes with a default software center which let you install various software. You can search for software by its name or various categories.

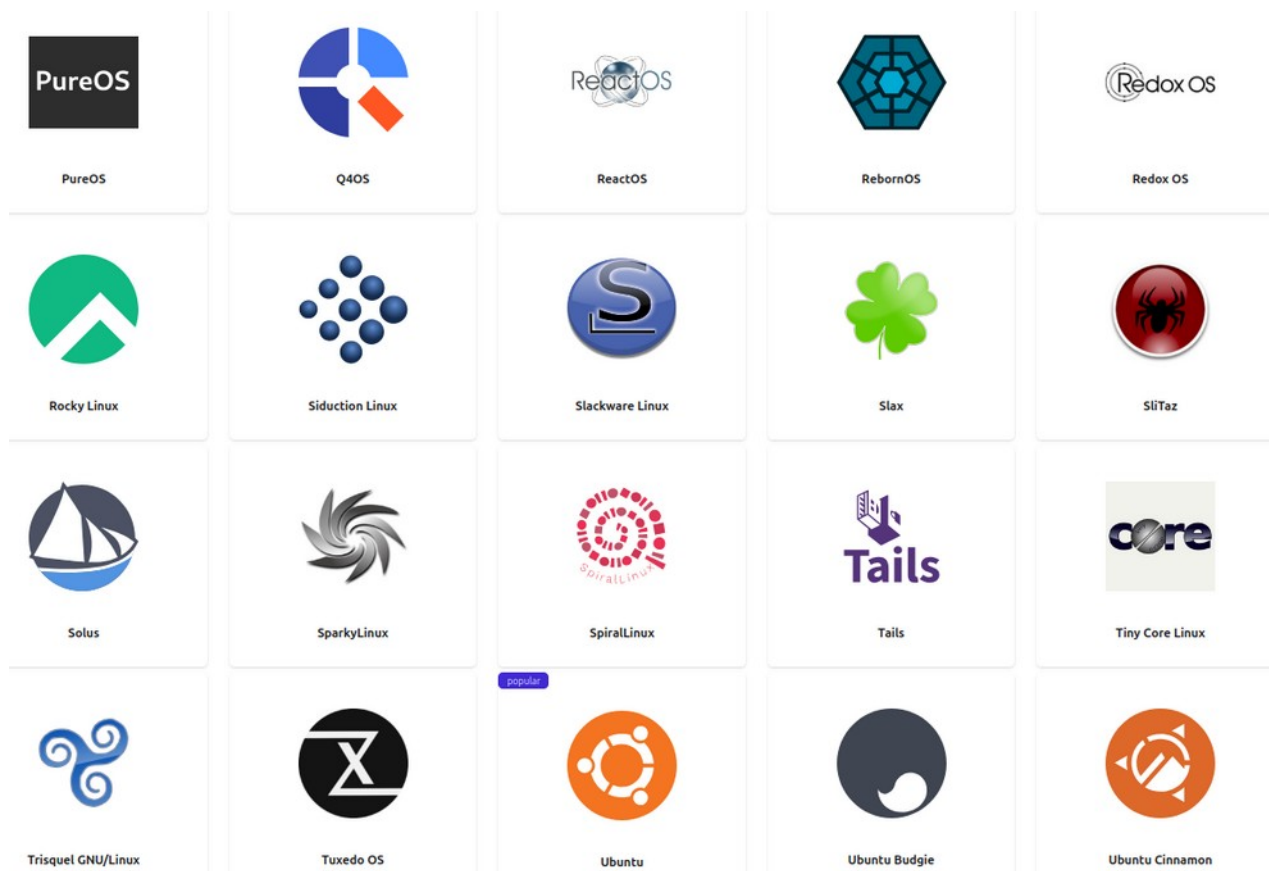
[How To Install Software in Ubuntu Linux: A Complete Guide for Newbie](#)

[Flathub guide](#) [Flatpak-guide](#)

Test Linux distros online!

Try out different Linux distributions online! Virtual platforms let you experience the look, feel, and functionality of Linux OS without any commitment.

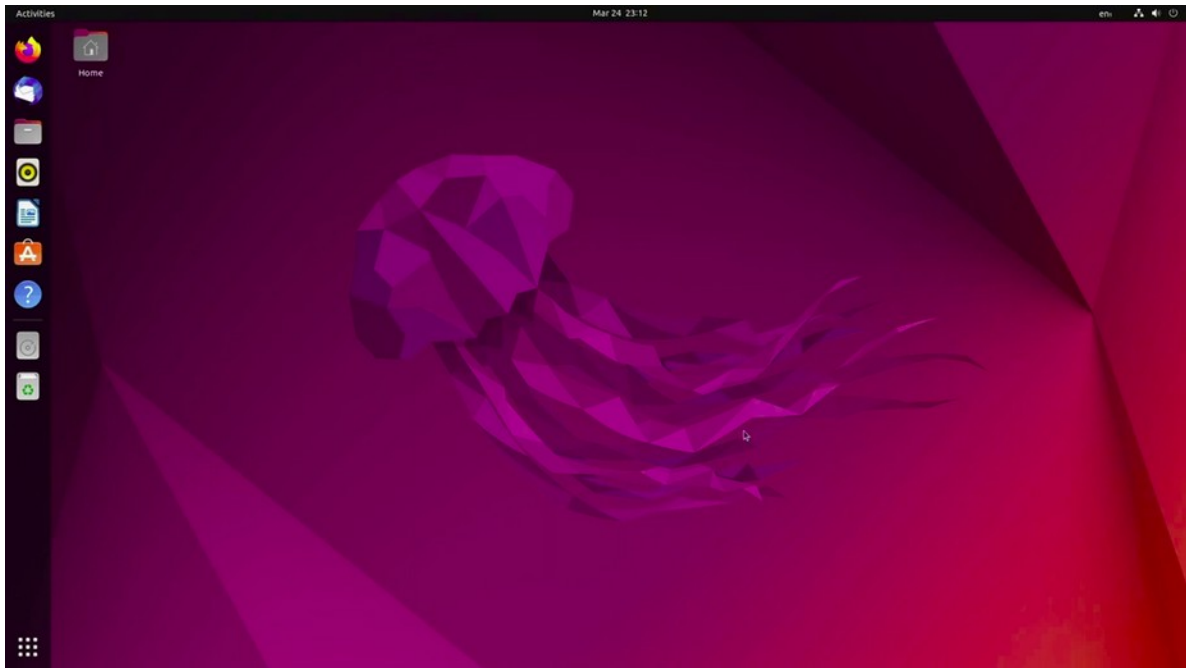
<https://distrosea.com>



Youtube video!

[Exploring DistroSea: Test Linux Distributions Online](#)

Ubuntu 22.04 LTS



Ubuntu is a free and open-source Linux distribution based on Debian. Ubuntu is officially released in three editions: Desktop, Server, and Core. All the editions can run on the computer alone, or e.g. in Windows. Ubuntu is a popular operating system for cloud computing, with support for OpenStack. [Wikipedia](#)

Package manager: GNOME Software, APT, dpkg, Snappy, flatpak

License: Free software

Userland: GNU

Developer: Canonical Ltd.

Programming languages: Python, Java, C, C++, C#

Official Website: <https://ubuntu.com/desktop>

Forum: <https://ubuntuforums.org/> or <https://askubuntu.com/>

Ubuntu 18.04 LTS will be supported for 5 years for Ubuntu Desktop → 2023

Ubuntu 20.04 LTS will be supported for 5 years for Ubuntu Desktop → 2025

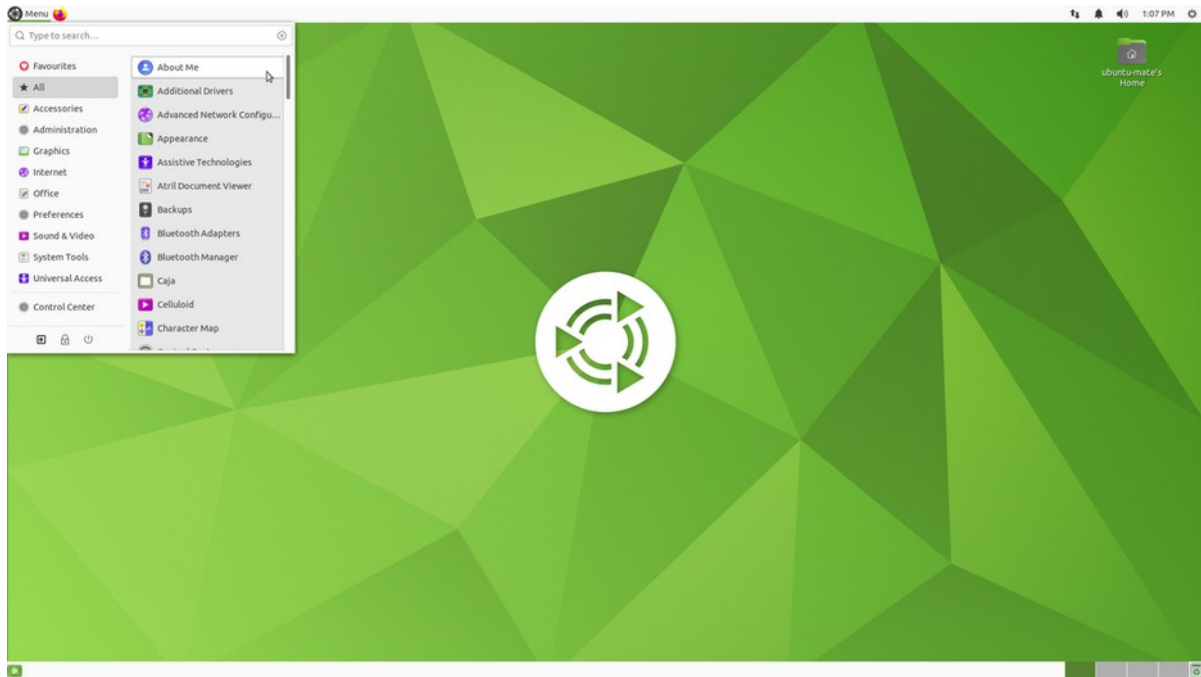
Ubuntu 22.04 LTS will be supported for 5 years for Ubuntu Desktop → 2027

[Beginner's Guide: How To Install Ubuntu 18.04](#)

[How to Install Ubuntu 20.04 LTS](#)

[How to install Ubuntu 22.04](#)

Ubuntu MATE



Ubuntu MATE is a free and open-source Linux distribution and an official derivative of Ubuntu. Its main differentiation from Ubuntu is that it uses the MATE desktop environment as its default user interface, instead of the GNOME 3 desktop environment that is the default user interface for Ubuntu. [Wikipedia](#)

Package manager: dpkg

Developer: Ubuntu MATE team

Default user interface: MATE

Update method: APT

Official Website: ubuntu-mate.org

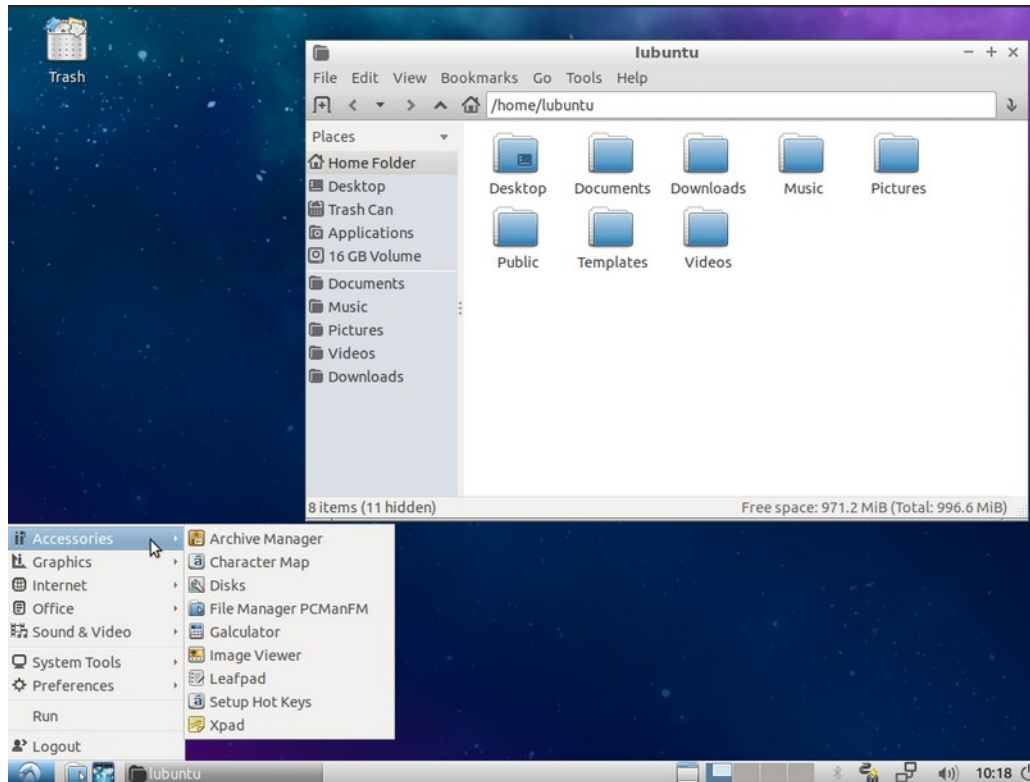
Forum: <https://ubuntu-mate.community/c/support>

Like Lubuntu Ubuntu MATE it also boasts lowered hardware requirements -- a minimum of a Pentium 1GHz processor and 1GB of RAM.

Ubuntu MATE is for user new to Linux who want a general purpose OS with a familiar interface.

Desktop Environment: MATE

Lubuntu



Lubuntu is a lightweight Linux distribution based on Ubuntu, using the LXQt desktop environment in place of Ubuntu's GNOME desktop. [Wikipedia](#)

OS family: Linux

Default user interface: LXQt

Developer: Lubuntu Community

Working state: Active development

License: Mainly the GNU GPL / various others

Lubuntu is for user who want to resurrect outdated laptops or desktops, install a fully functional desktop OS on a single-board computer, or who simply want a fast and lightweight operating system.

Desktop Environment: LXDE (newer version uses LXQt)

Official Website: lubuntu.me

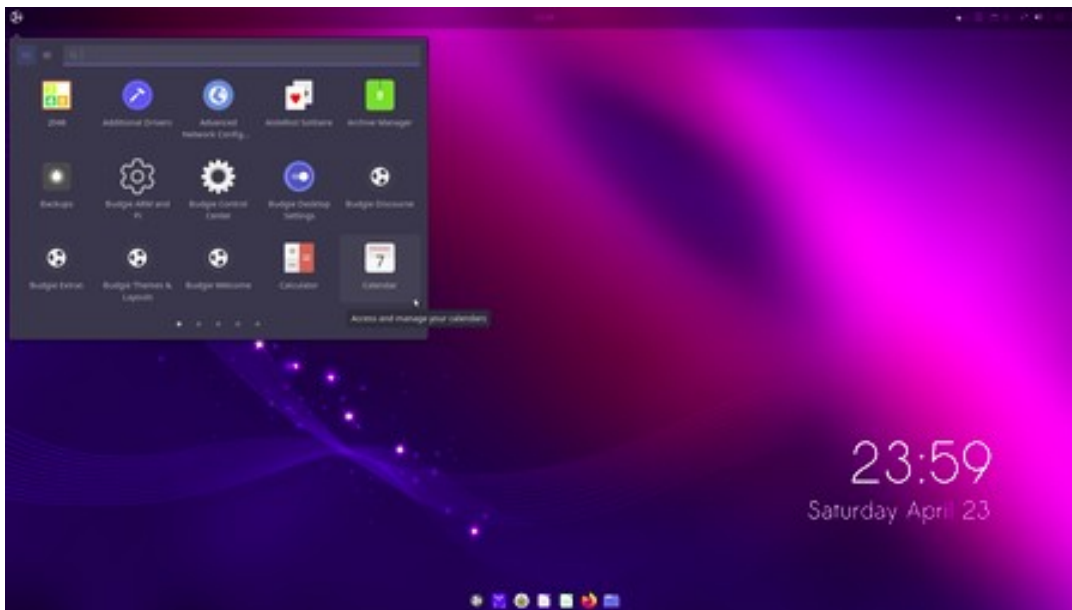
Forum: <https://discourse.lubuntu.me/>

Lubuntu is a stripped-down Linux operating system with lightweight software. As such it has very minimal hardware requirements. You can run Lubuntu on an Intel Pentium II or Celeron CPU with as little as 512MB of memory. Though, as the developers note, most people will want 1GB of memory for running everyday internet apps like Facebook or Google Docs.

Still, those are some seriously lean requirements, and Lubuntu flies where newer versions of Windows can't even get off the starting block.

You'll still get a fully-featured office suite, Firefox, multiple workspaces and customization options.

Ubuntu Budgie



The project was started in 2008 by co-founders Artyom and Kyrill Zorin.
The company is based in Dublin, Ireland.

Ubuntu Budgie is an official community flavor of Ubuntu featuring the Budgie desktop. It combines the stable and thoroughly-tested Ubuntu core with a modern, lightweight and traditional-looking desktop developed by the Solus project. [Wikipedia](#)

Update method: APT

Developer: Ubuntu Budgie team

Default user interface: Budgie

Package manager: dpkg, Snappy

Official Website: ubuntubudgie.org/

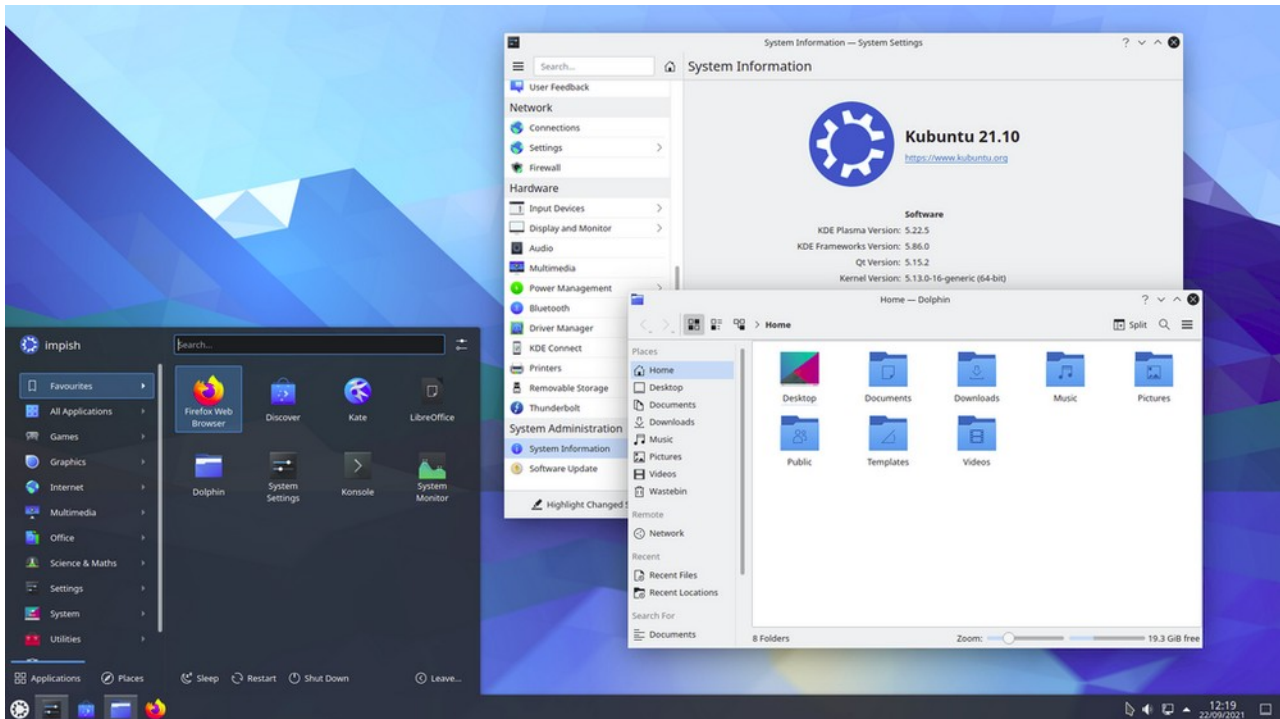
Forum: <https://discourse.ubuntubudgie.org/>

Like Ubuntu, Ubuntu Budgie is extremely friendly to newcomers.

Unlike Gnome on Ubuntu, Budgie also includes a couple different default themes -- and easy access to several more -- to customize the look and feel.

One of Budgie's distinguishing characteristics is its use of lightweight applets (mini-apps for your panel) that extend your desktop's features and functionalities.

Kubuntu



Kubuntu is an official flavour of the Ubuntu operating system which uses the KDE Plasma Desktop instead of the GNOME desktop environment. As part of the Ubuntu project, Kubuntu uses the same underlying systems. [Wikipedia](https://en.wikipedia.org/wiki/Kubuntu)

Package manager: dpkg

Default user interface: KDE Plasma 5

Developer: Community-driven, previously Blue Systems/Canonical Ltd.

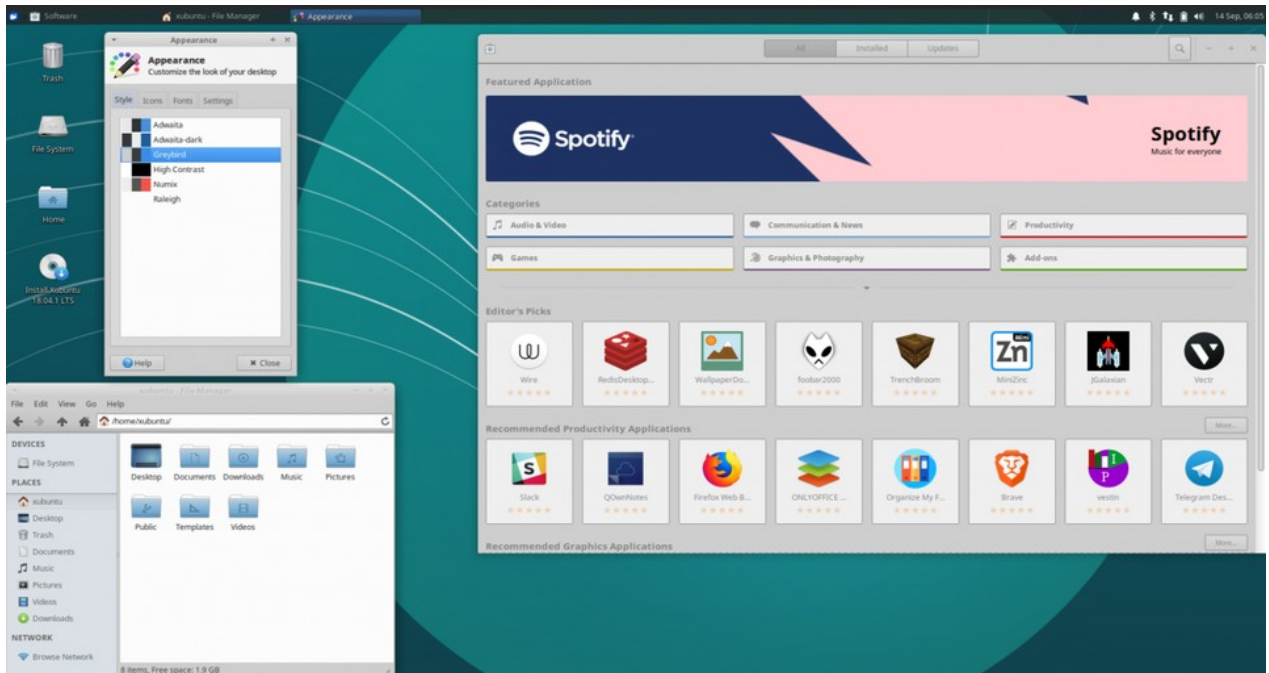
Update methods: PackageKit, APT

Kubuntu is for users with semi-modern computers who want a slick, highly customizable desktop that resembles the familiar Start Menu/System Tray setup of Windows.

Official Website: <http://kubuntu.org>

Forum: <https://kubuntu.org/support/>

Xubuntu



Xubuntu is a Canonical Ltd.–recognized, community-maintained derivative of the Ubuntu operating system. The name Xubuntu is a portmanteau of Xfce and Ubuntu, as it uses the Xfce desktop environment, instead of Ubuntu's GNOME desktop.

[Wikipedia](#)

Package manager: dpkg

Default user interface: Xfce

Developer: Community

Parent company: Canonical

Xubuntu is for user who want a complete desktop experience optimized for usability and everyday tasks, with sharp looks and responsiveness regardless of your hardware's age.

Desktop Environment: Xfce

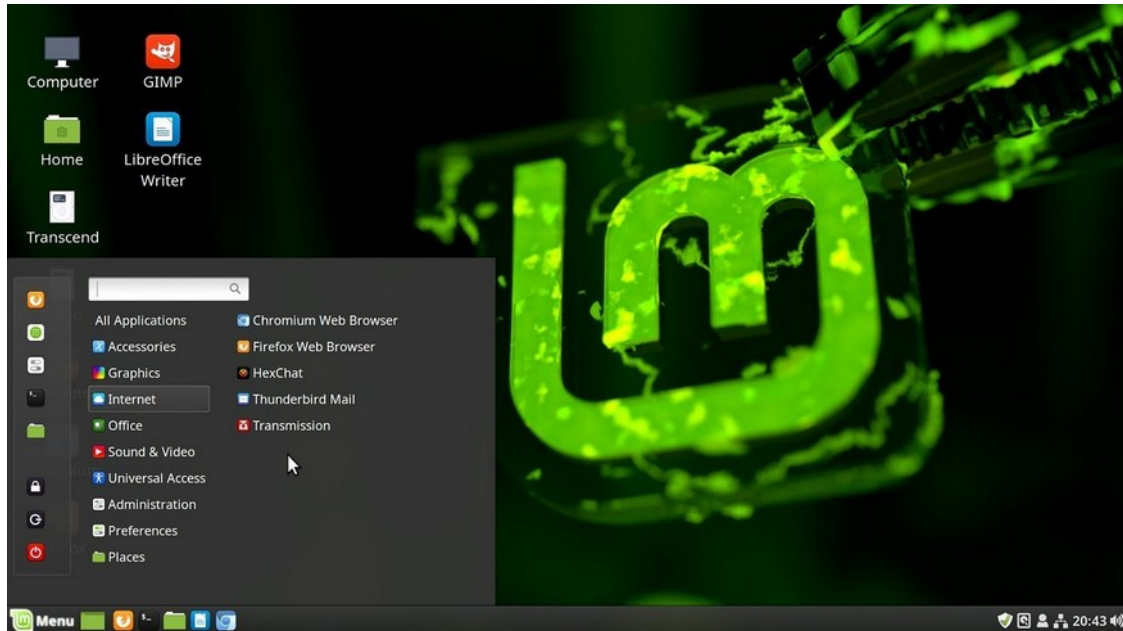
Official Website: xubuntu.org

Forum: <https://xubuntu.org/help/>

Like all Ubuntu flavors, Xubuntu offers exceptional hardware support regardless of your PC's age. And like Lubuntu, it aims to provide a fully functional desktop environment for everyday users, but with a selection of curated, lightweight software designed to run at blazing speeds on modern computers while still running smoothly on older hardware.

Besides aiming to strike a perfect balance between usability and maximizing system performance, the highlight here is the Xfce desktop environment. Given how few system resources it uses, Xfce looks sharp on almost any display.

Linux Mint



Linux Mint is a community-driven Linux distribution based on Ubuntu that strives to be a "modern, elegant and comfortable operating system which is both powerful and easy to use." [Wikipedia](#)

Package manager: dpkg

License: Mainly GPL and other free software licenses, minor additions of proprietary software

Default user interface

1.0: KDE

2.0-12: GNOME

13-18.3: Cinnamon / MATE / KDE SC 4 / Xfce

19-21: Cinnamon / MATE / Xfce[4]

Official Website: <https://linuxmint.com/>

Forum: <https://forums.linuxmint.com/>

Here you can compare the differences between Cinnamon and Mate screens.
<https://linuxmint.com/screenshots.php>

Zorin



Zorin OS is a personal computer operating system based on Ubuntu. It is marketed as an operating system designed for users new to Linux-based computer systems. [Wikipedia](#)

Package manager: APT, dpkg, Snappy, flatpak

Developer: Zorin Group

Default user interface: GNOME

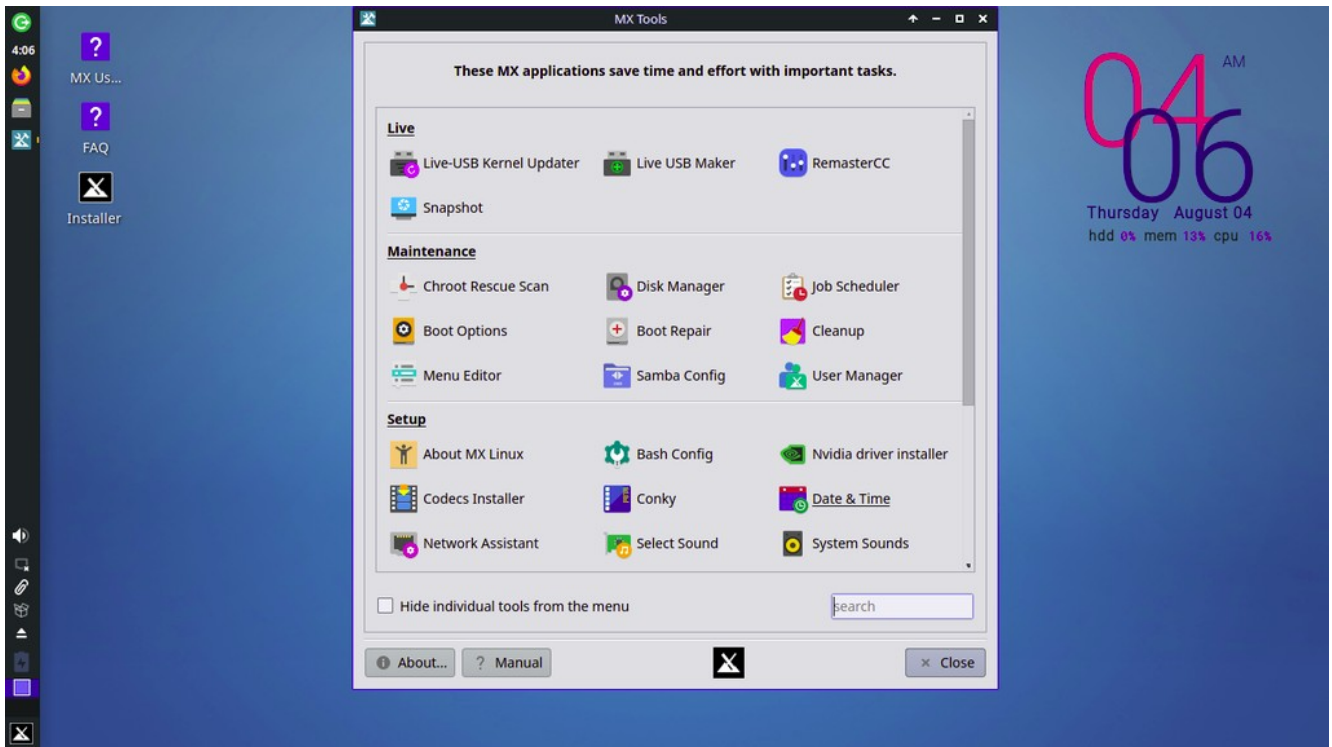
Written in: C++, Python, D

Official Website: <https://zorinos.com/>

Forum: <https://zoringroup.com/forum/viewforum.php?f=3>

I would say that if you are a newbie and are a basic user, Ubuntu, Mint, or Zorin would be a good start. If you like exploring, try other flavours and explore the fantastic world of Linux. You never know where you might end up.

MX Linux



MX Linux is a midweight Linux operating system based on Debian stable and using core antiX components, with additional software created or packaged by the MX community. [Wikipedia](#)

Package manager: APT

Default user interface: Xfce

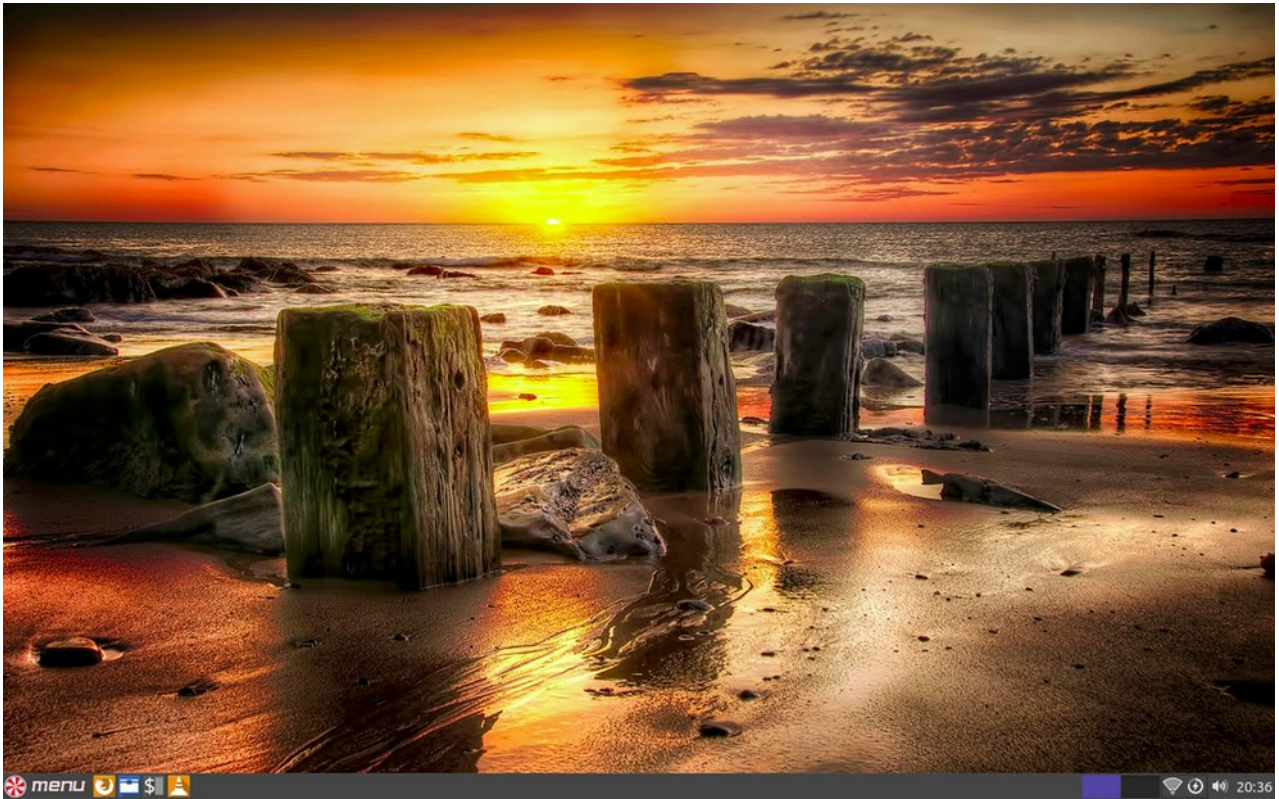
OS family: Unix-like

Update method: LTS

Official Website: <https://mxlinux.org/>

Forum: <https://forum.mxlinux.org/>

Peppermint



Peppermint Linux OS is a cloud-centric OS based on Lubuntu, a derivative of the Ubuntu Linux operating system that uses the LXDE desktop environment. It aims to provide a familiar environment for newcomers to Linux, which requires relatively low hardware resources to run. [Wikipedia](#)

Developer: Peppermint, LLC

Default user interface: LXDE

OS family: Unix-like

Source model: Open source

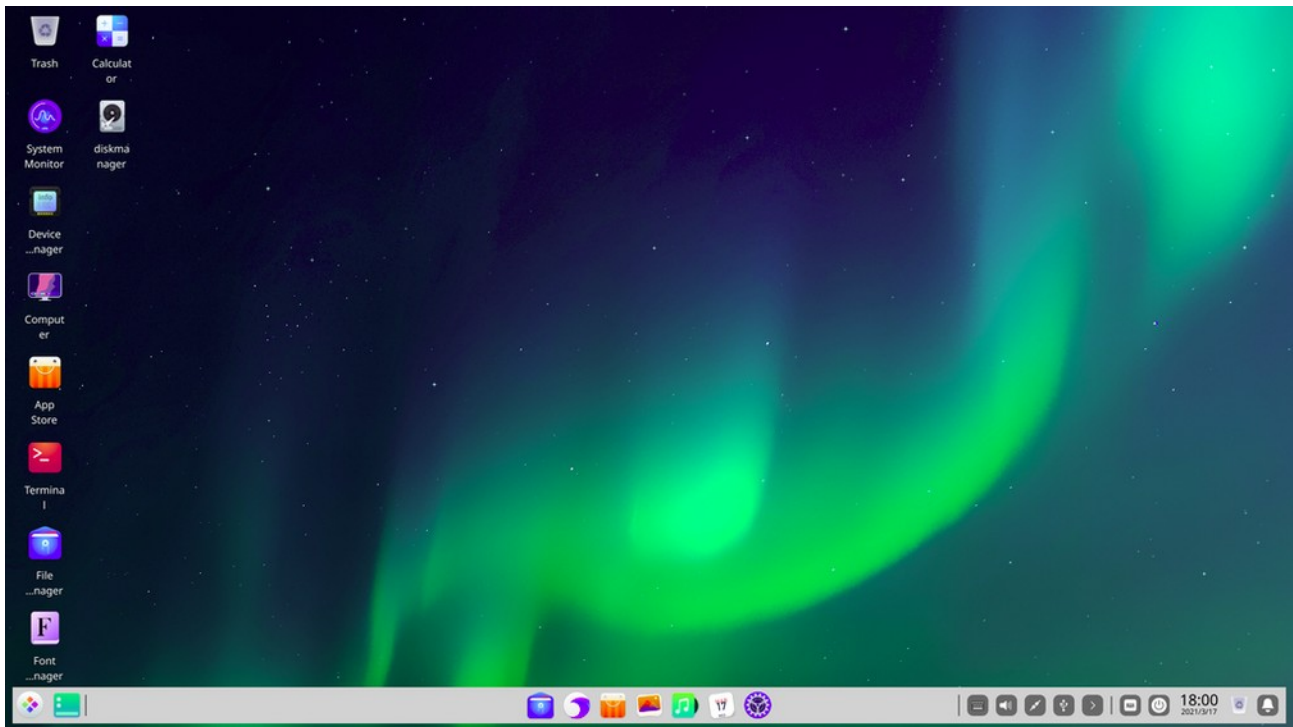
Official Website: <https://peppermintos.com/>

Forum: <https://forum.peppermintos.com/>

<https://peppermintos.com/screenshots/>

Peppermint has an Ubuntu base, so it is stable and there is a lot of software available. It uses the file manager [Nemo](#).

Deepin



Deepin is an open source operating system based on Debian's stable branch. It features DDE, the Deepin Desktop Environment, built on Qt. As of version 15.10 it also uses dde-kwin, a copy of KDE Plasma's window manager. [Wikipedia](#)

Package manager: APT, dpkg

OS family: Linux

Source model: Open-source

Developer: Wuhan Deepin Technology Co., Ltd

Marketing target: Personal computing

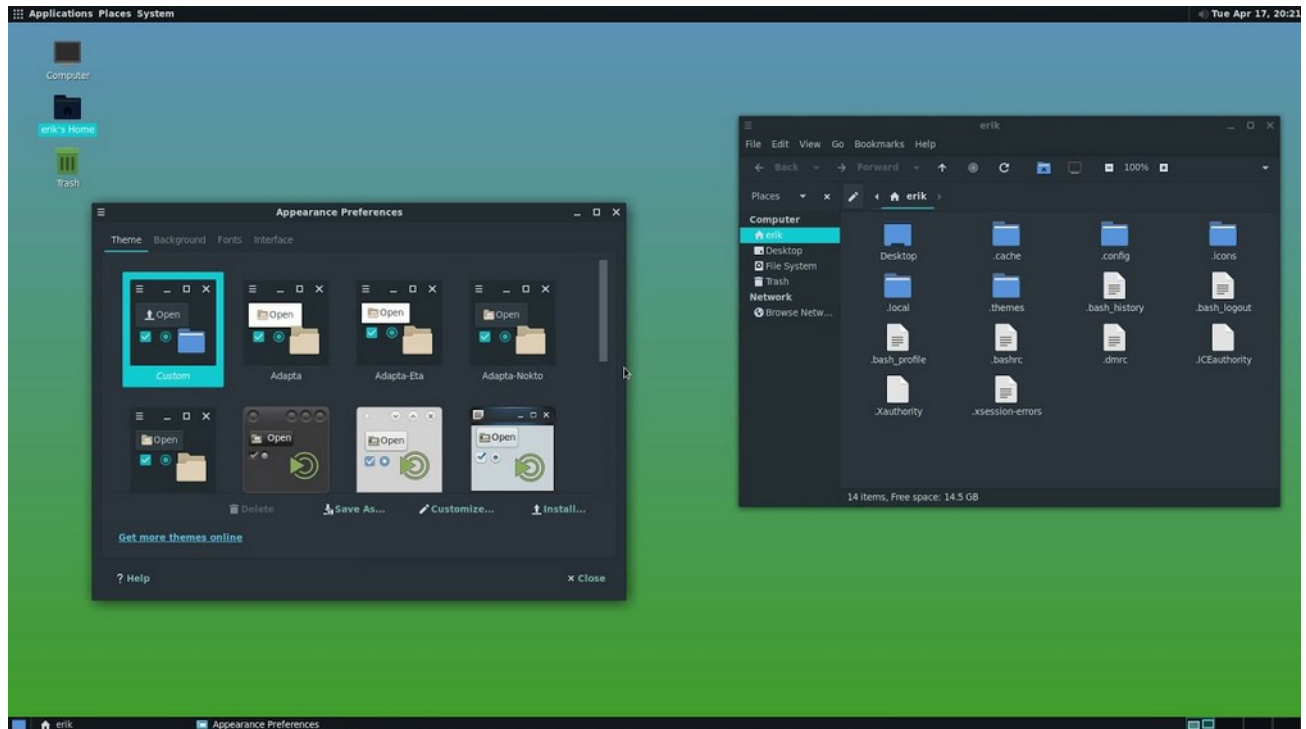
Official Website: <https://www.deepin.org/en/>

Forum: <https://bbs.deepin.org/en>

[What are the best Linux distros for a casual user?](#) Ken Hou (ツツΞ), former Mechanical Engineer at Japan [Answered Jun 18](#)

Try Deepin linux. It's a distro from China (yeah I know.) based on Debian. The UI mimics MacOS but the user experience is closer to Windows. You won't need to touch the terminal for most of the time. You check it out on <http://distrowatch.com> to see others' comments.

Arch Linux



Arch Linux is a Linux distribution for computers based on x86-64 architectures. Arch Linux is composed of free, open-source and nonfree software, and supports community involvement. [Wikipedia](https://en.wikipedia.org/wiki/Arch_Linux)

Package manager: pacman

Userland: GNU Core Utilities

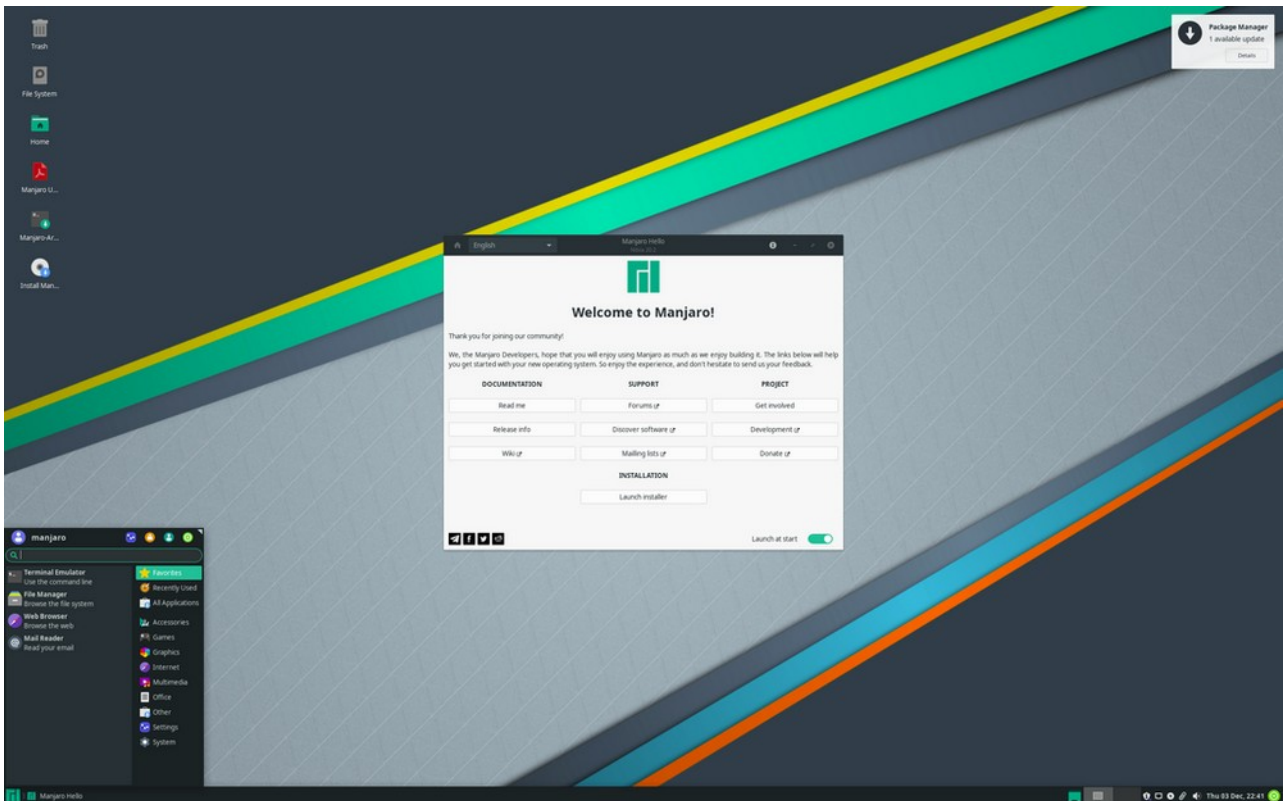
License: Free software (GNU GPL and other licenses)

Developer: Aaron Griffin and others

Official Website: <https://www.archlinux.org/>

Forum: <https://bbs.archlinux.org/>

Manjaro



Manjaro is an open-source Linux distribution based on the Arch Linux operating system. Manjaro has a focus on user friendliness and accessibility, and the system itself is designed to work fully "straight out of the box" with its variety of pre-installed software. [Wikipedia](https://en.wikipedia.org/wiki/Manjaro)

Developer: Guillaume Benoit, Philip Müller

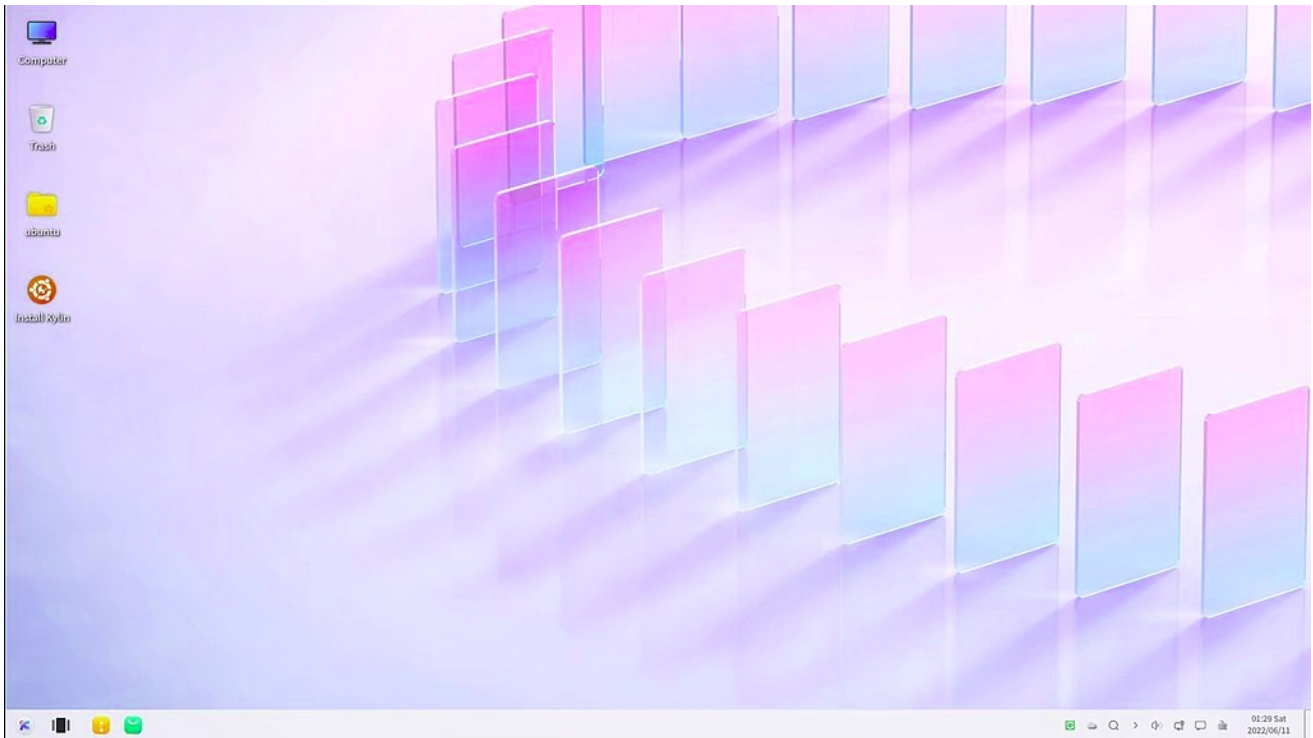
Working state: Current (bleeding edge, rolling release)

Default user interfaces: Xfce, KDE Plasma 5, GNOME

Official Website: <https://manjaro.org/>

Forum: <https://forum.manjaro.org/>

Ubuntu Kylin



Ubuntu Kylin is the official Chinese version of the Ubuntu computer operating system. It has been described as a "loose continuation of the Chinese Kylin OS".

[Wikipedia](#)

Developer: National University of Defense Technology, Canonical Ltd.

Ubuntu Kylin Community

OS family: Unix-like

Default user interface: UKUI based on MATE which based on top of GNOME 2.x

Package manager: dpkg

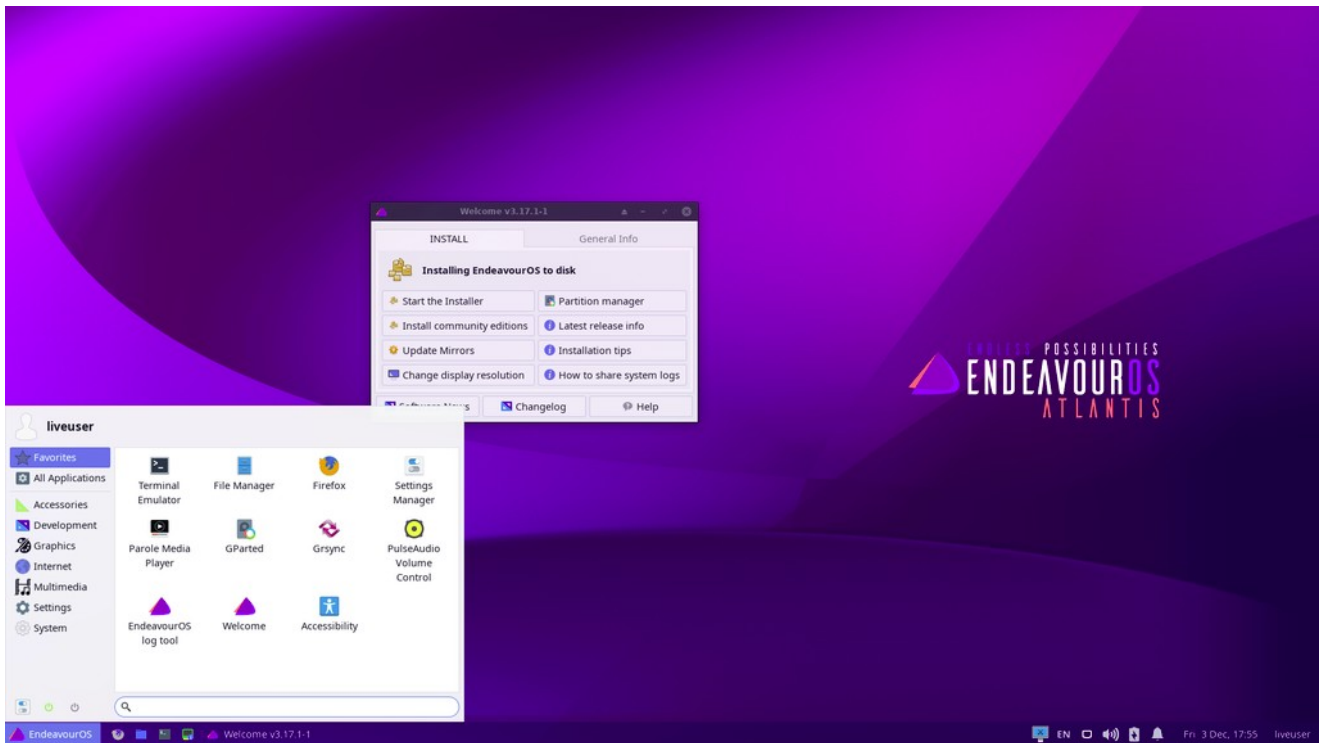
Official Website: <https://www.ubuntukylin.com/index.php?lang=en> 403 Forbidden

Forum: <https://www.ubuntukylin.com/ukylin/forum.php> 403 Forbidden

Forum is mostly in chinese!

Ubuntu Kylin 19.04 LTS ships with UKUI desktop environment, delivering new features, A whole new style of boot up animation, log-in/screen-lock program and OS theme. An overall update of desktop environment, fixed bugs, file preview function and timer log out, plus the latest WPS and Sogou put-in method are integrated to offer a more friendly experience for users.

EndeavourOS



EndeavourOS is an Arch Linux based Linux distribution. It is the successor to Antergos. [Wikipedia](#)

EndeavourOS features the graphical calamares installer capable of installing Xfce without an Internet connection; and optionally Budgie, Cinnamon, GNOME, i3, KDE Plasma 5, LXQt, and MATE desktop environments with an Internet connection.

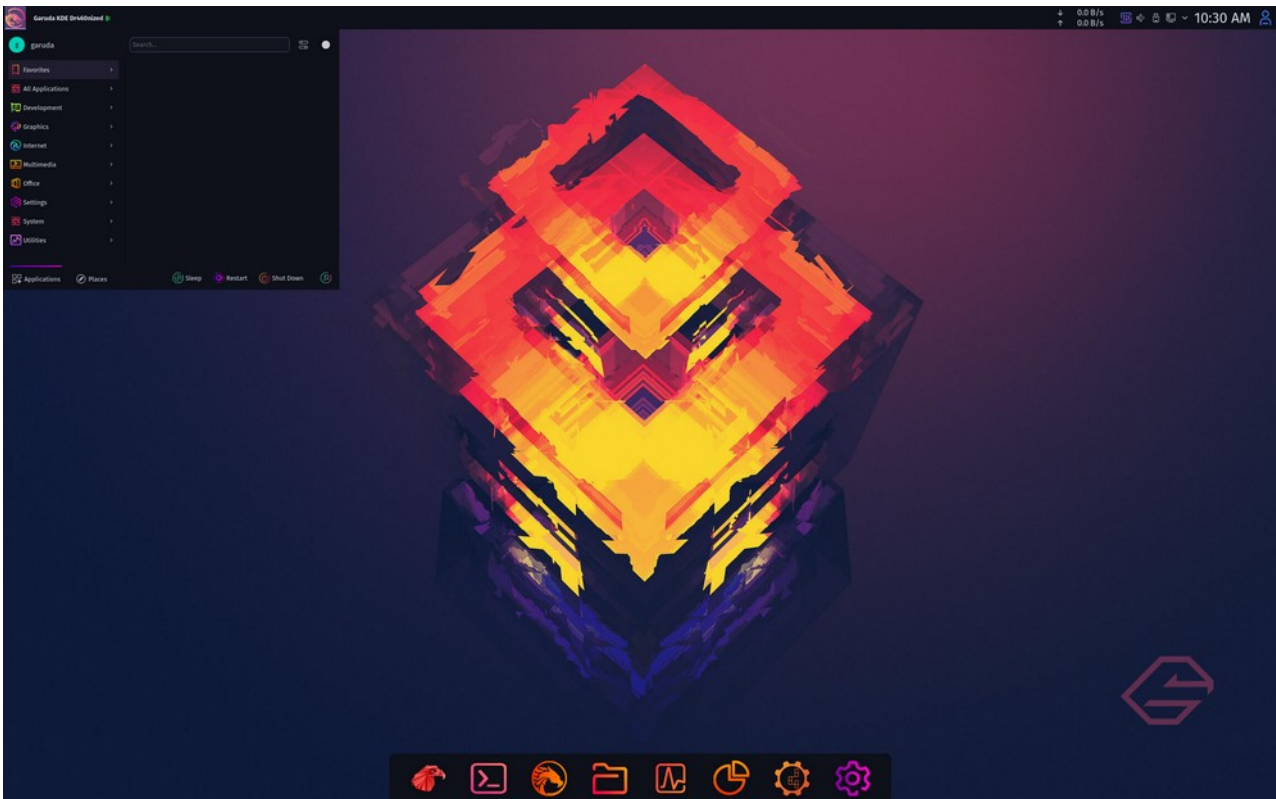
Developer: Bryan Poerwoatmodjo, Fernando Omiechuk Frozi, Johannes Kamprad, Manuel

OS family: Linux (Unix-like)

Default user interface: Xfce (default), MATE, Cinnamon, Deepin, LXQt, Budgie, i3, GNOME, KDE Plasma 5, Sway, Openbox, bspwm, Qtile

Official Website: <https://endeavouros.com/>
Forum: <https://forum.endeavouros.com/>

Garuda Linux



Garuda Linux is a Linux distribution based on the Arch Linux operating system. Garuda Linux is available in wide range of popular Linux desktop environments, including modified versions of the KDE Plasma 5 desktop environment. It features a rolling release update model using Pacman as its package manager. The term Garuda, which originates from Hinduism, is defined as a divine eagle-like sun bird and the king of birds. [Wikipedia](#)

Developer: SGS 🇩🇪, Shrinivas Vishnu Kumbhar 🇮🇳, tbg 🇨🇦, dr460nf1r3 (Nico) 🇩🇪, Yorper 🇦🇺, Naman Garg 🇮🇳, Filo 🇮🇹, TNE 🇪🇸, Πέτρος (Petsam) 🇬🇷, Dalto 🇺🇸, Zoeruda 🇺🇸, Librewish 🇮🇳, Eduard Tolosa 🇪🇸

OS family: Unix-like

Package manager: Pacman

Desktop environment: KDE, Xfce, GNOME, LXQt-kwin, Cinnamon, Mate, Wayfire, Qtile, i3wm and Sway

Official Website: <https://garudalinux.org/>

Forum: <https://forum.garudalinux.org/>

Ubuntu Studio



Ubuntu Studio is a recognized flavor of the Ubuntu Linux distribution, which is geared to general multimedia production. [Wikipedia](#)

Developer: Ubuntu Studio Project

Marketing target: Multimedia enthusiasts

Default user interface: Xfce

Package manager: Advanced Packaging Tool (APT)

Available in: English Language, French language, Spanish Language, Portuguese Language

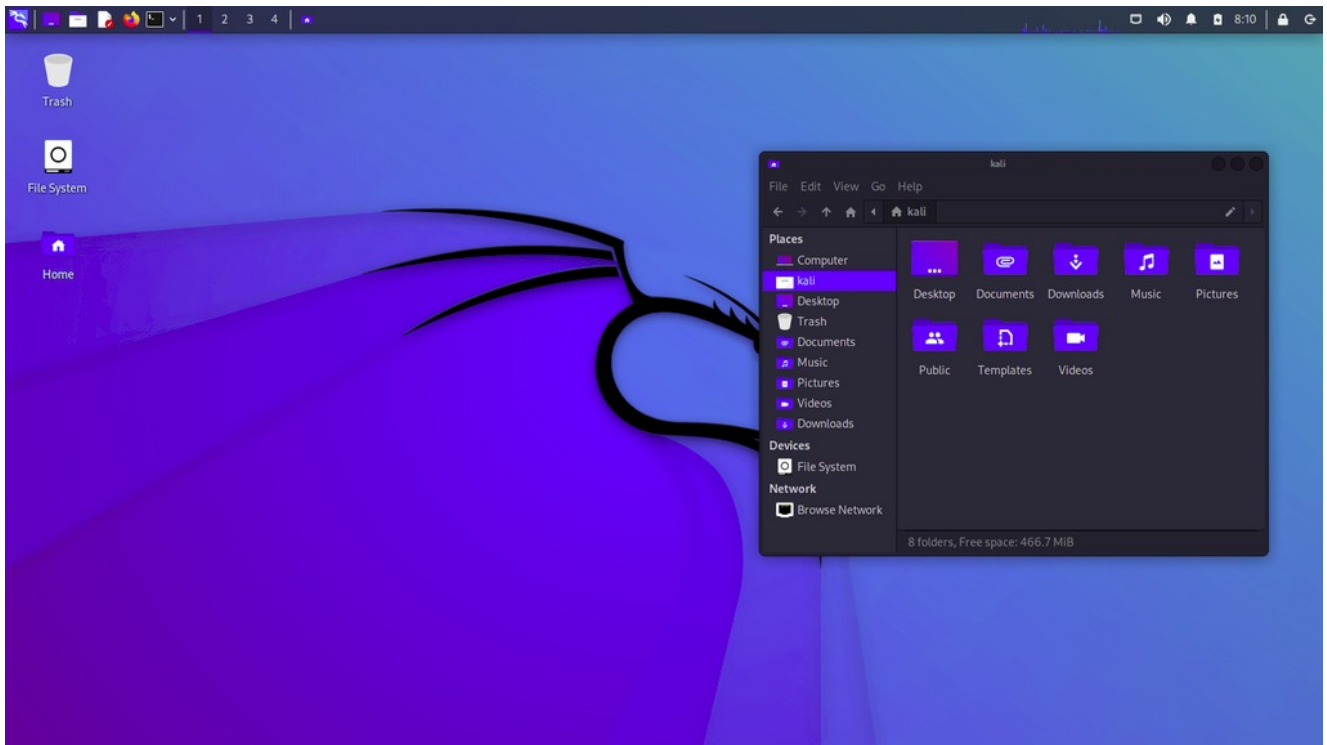
Who It's For: Creative professionals looking for a distro that bundles in a wealth of open source audio editing, desktop publishing, video production and graphic design software. Ubuntu Studio aims to cover your entire workflow.

Desktop Environment: Xfce (with KDE Plasma as alternative)

Official Website: ubuntustudio.org

Forum: <http://ubuntustudio.org/support/>

Kali Linux



Kali Linux is a Debian-derived Linux distribution designed for digital forensics and penetration testing. It is maintained and funded by Offensive Security Ltd. [Wikipedia](#)

Package manager: dpkg

Update method: APT

Default user interface: GNOME Shell

Developer: Offensive Security

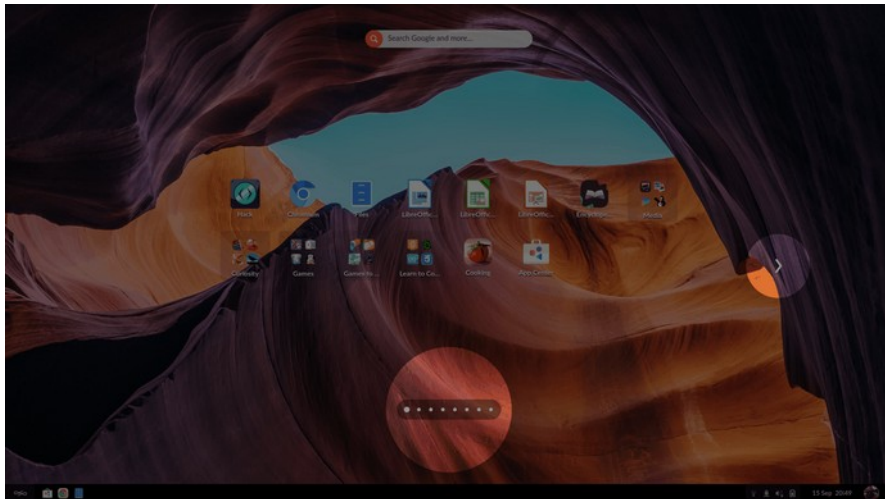
Official Website: <https://www.kali.org/>

Forum: <https://forums.kali.org/>

Educational Linux Distros

Best Educational Linux Distros for Children & Schools [2022]

The 15 Best Educational Linux Apps for Students



Endless OS

Endless Mobile, Inc. is an American information technology company that develops the Linux-based operating system Endless OS and reference platform hardware for it.[5] The company was founded in 2011 and is based in San Francisco, California, U.S. with an additional office in Rio de Janeiro, Brazil.

[Wikipedia](#)

Website <https://endlessos.com/>

Ubermix

Website <https://ubermix.org/>

Zorin OS 16 Education

Website <https://zorin.com/os/education/>

Kano OS

Website <https://kano.tech/eu>

AcademiX GNU/Linux

Website <https://academixproject.com/en/home/>

Sugar

Website <https://www.sugarlabs.org/>

Desktop environments for Linux



UNITY is a graphical shell for the GNOME desktop environment originally developed by Canonical Ltd. for its Ubuntu operating system. Unity debuted in the netbook edition of Ubuntu 10.10. [Wikipedia](#)

Developer(s): Canonical Ltd., The Ayatana Project contributors, Upports Stable release: 7.5 / 25 May 2016 Initial release date: June 9, 2010 Preview release: 8.16.1

Operating system: Ubuntu Desktop, Ubuntu TV, Ubuntu Touch Written in: JavaScript, QML, C++, Python, Vala



GNOME is a free and open-source desktop environment for Unix-like operating systems. GNOME was originally an acronym for GNU Network Object Model Environment, but the acronym was dropped because it no longer reflected the vision of the GNOME project. [Wikipedia](#)

The GNU Project Developed by: The GNOME Project Original author(s) License: GPLv2+ Stable release: 3.32.2 (8 May 2019) Written in: XML, C++, C#, HTML, Vala, Python, JavaScript, Cascading Style Sheets, Scheme

Platforms: Wayland, X Window System

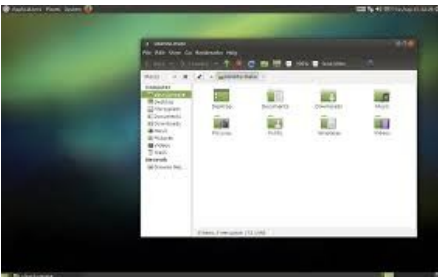


KDE Plasma 5 is the fifth and current generation of the graphical workspaces environment created by KDE primarily for Linux systems. KDE Plasma 5 is the successor of KDE Plasma 4 and was first released

on 15 July 2014. [Wikipedia](#)

Stable release: 5.16.4 (30 July 2019) Initial release date: July 15, 2014 Preview release: 5.16 Beta (16 May 2019)

Operating system: Unix-like Developed by: KDE Written in: C++, QML



MATE is a desktop environment composed of free and open-source software that runs on Linux and BSD operating systems. An Argentine user of Arch Linux started the MATE project to fork and continue GNOME 2 in response to the negative reception of GNOME 3, which replaced its traditional taskbar with GNOME Shell. [Wikipedia](#)

Operating system: Unix-like with X11 (X Window System) Developer(s): Stefano Karapetsas, et. al. Initial release: August 19, 2011

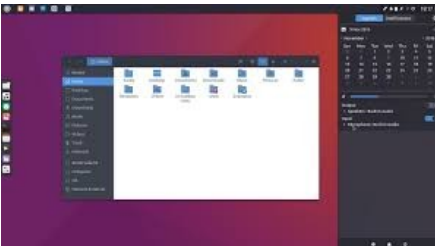
Stable release: 1.22 / March 18th, 2019 License: GPLv2, LGPLv2 Written in: C, C++, Python



Cinnamon is a free and open-source desktop environment for the X Window System that derives from GNOME 3 but follows traditional desktop metaphor conventions. [Wikipedia](#)

Stable release: 4.2.3 / 25 July 2019 Operating system: Unix-like with X Developer(s): Linux Mint team License: GPLv2

Written in: C, JavaScript, Python

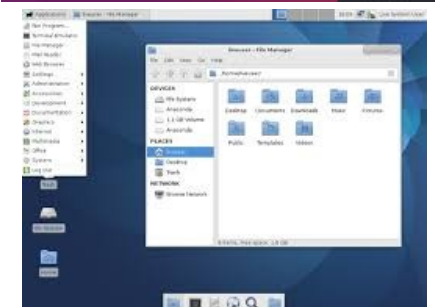


Budgie is a desktop environment that uses GNOME technologies such as GTK+ and is developed by the Solus project as well as by contributors from numerous communities such as Arch Linux, Manjaro Linux and Ubuntu Budgie. Budgie's design emphasizes simplicity and elegance. [Wikipedia](#)

Stable release: 10.5 / March 17, 2019 Initial release date: December 7, 2013

Operating system: Unix-like with X11 (X Window System) Developer(s): Ikey Doherty, Joshua Strobl and Solus project team

License: GNU LGPLv2.1 for libraries, GNU GPLv2 for binaries Written in: C, Vala



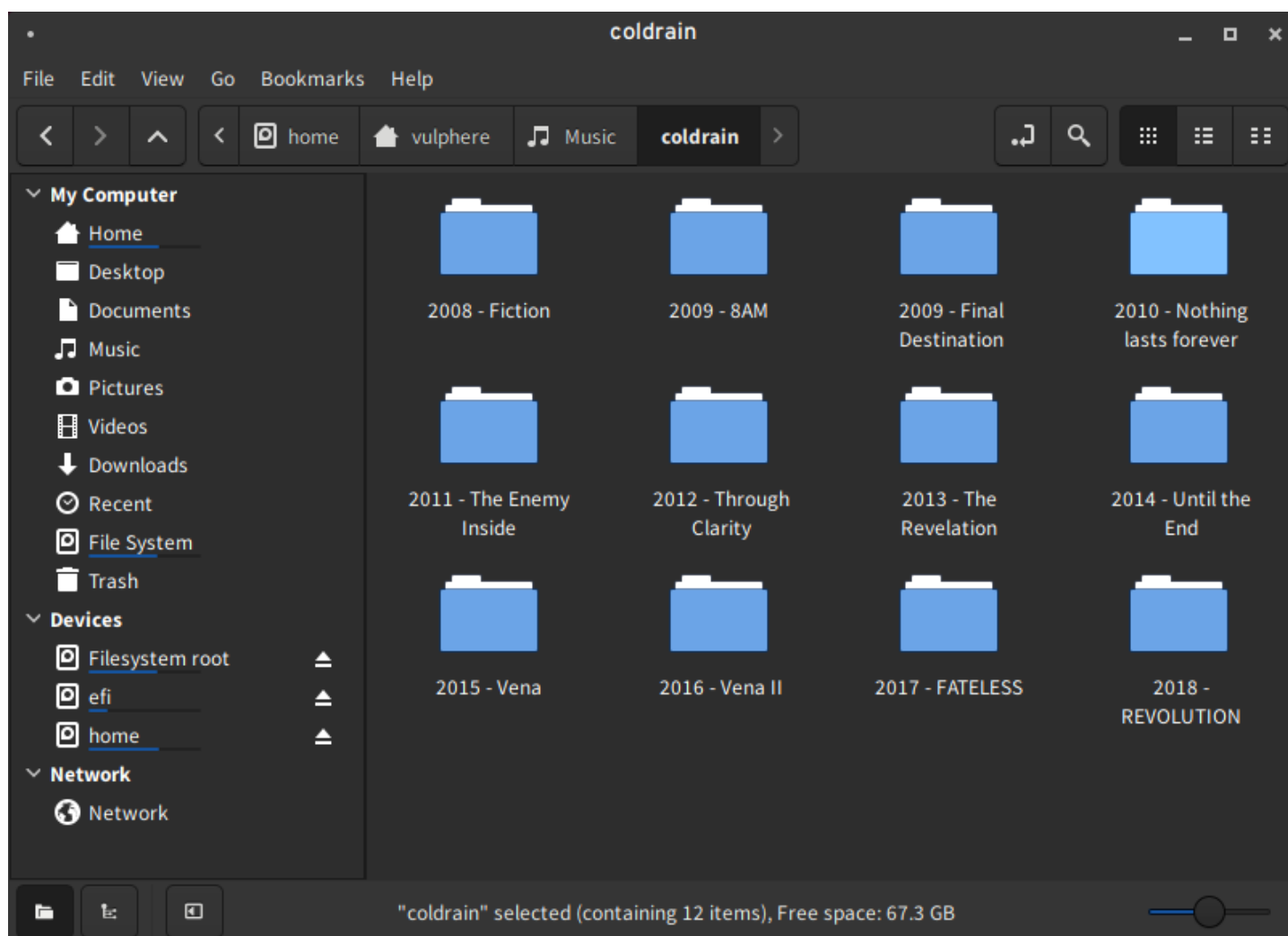
Xfce or XFCE is a free and open-source desktop environment for Unix-like operating systems such as Linux and BSD. Xfce aims to be fast and lightweight while still being visually appealing and easy to use. Xfce embodies the traditional Unix philosophy of modularity and re-usability. [Wikipedia](#)

Initial release date: 1996 Developed by: Free software movement

Written in: C (GTK)

Platform: Unix-like Stable release: 4.14 / 12 August 2019 Preview release: 4.14pre3 / 28 July 2019

File manager NEMO



File manager NEMO

Nemo is a free and open-source software and official file manager of the Cinnamon desktop environment. It is a fork of GNOME Files (formerly named Nautilus). [Wikipedia](#)

Developer(s) Linux Mint

Repository github.com/linuxmint/nemo

Operating system Unix-like

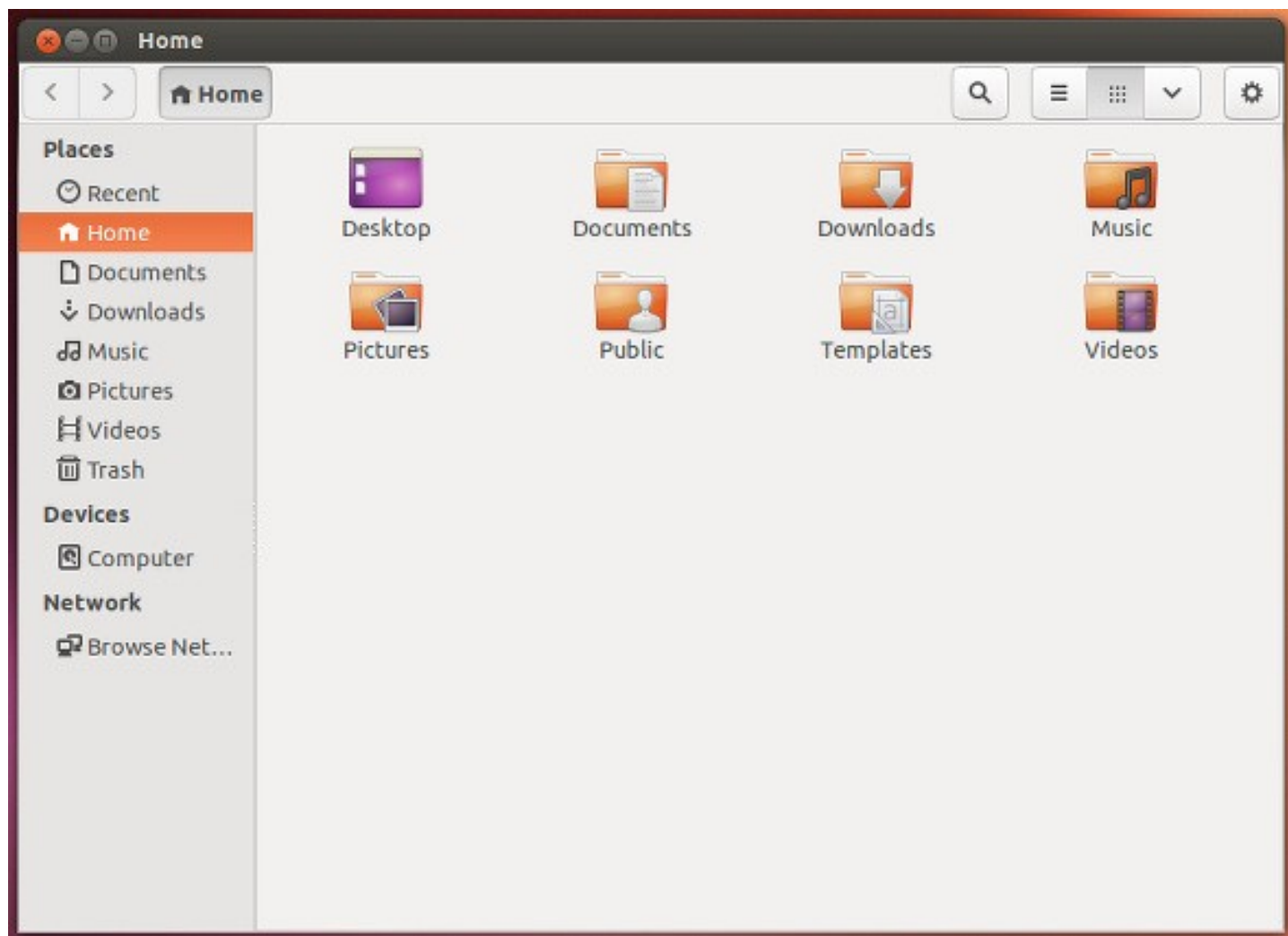
Platform Available in Multilingual

Type [File manager](#)

License GNU Lesser General Public License

Website github.com/linuxmint/nemo

File manager NAUTILUS (GNOME files)



GNOME Files, formerly and internally known as **Nautilus**, is the official file manager for the GNOME desktop. Nautilus was originally developed by Eazel with many luminaries from the tech world including Andy Hertzfeld, chief architect for Nautilus. [Wikipedia](#)
[GNOME Files](#)

Developed by: GNOME

Platform: GNOME

Written in: C (GTK)

Operating system: Linux

This is a file manager suitable for novices and everybody who values minimalism and simplicity.

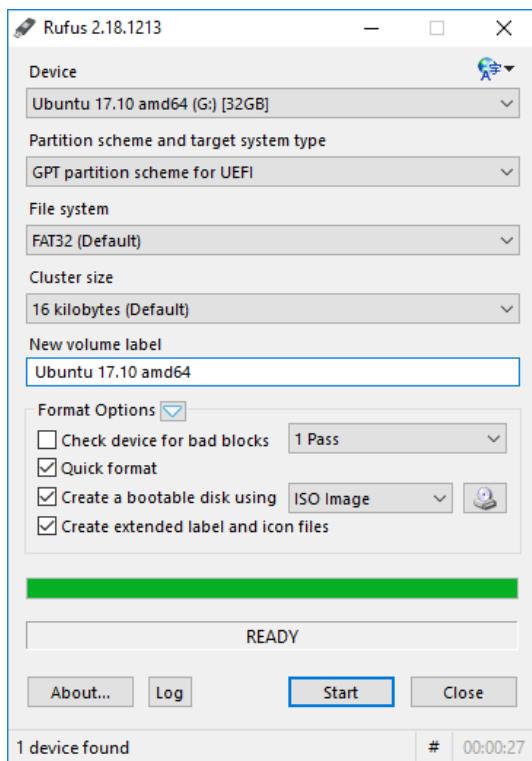
5 of the Best File Managers for Linux

Best Linux File Managers you can use in 2022

Installing Ubuntu USB live (test drive)

Windows computer

1. Go to <https://www.ubuntu.com/download/desktop>.
2. Select "Download Ubuntu 18.04 LTS" .
3. When downloading a program, you get an ISO file for your computer.
4. Start downloading Rufus from its web site. Install it by double-clicking the file you downloaded. Another option is Balena Etcher.
5. Insert a blank min 2 GT-usb stick into the computer.
6. Open Rufus.
7. Select USB stick.



Please note these: Bootable disk and ISO Image.

8. Click the icon next to "Create a bootable disk using" and find the downloaded Ubuntu disk image file.

9. Finally, select Start ("Start") and the recommended "Write in ISO image mode" and OK.

10. Now, there should be a bootable Ubuntu USB stick ready.
11. Shut down the computer.
12. Do you know how to start your computer so that your computer open the bios?

When you succeed here, you will see a menu (make sure you do not mess with the bios settings) from where to select the USB stick as the startup device and start the micro.

13. After that, Ubuntu should start up (it happens slowly because all the information is downloaded from a USB stick).
14. Choose "Try Uninstalling Ubuntu" in the menu.

Beginners!

How To Try Linux Without Making Any Changes To Your PC *creating a Live USB*